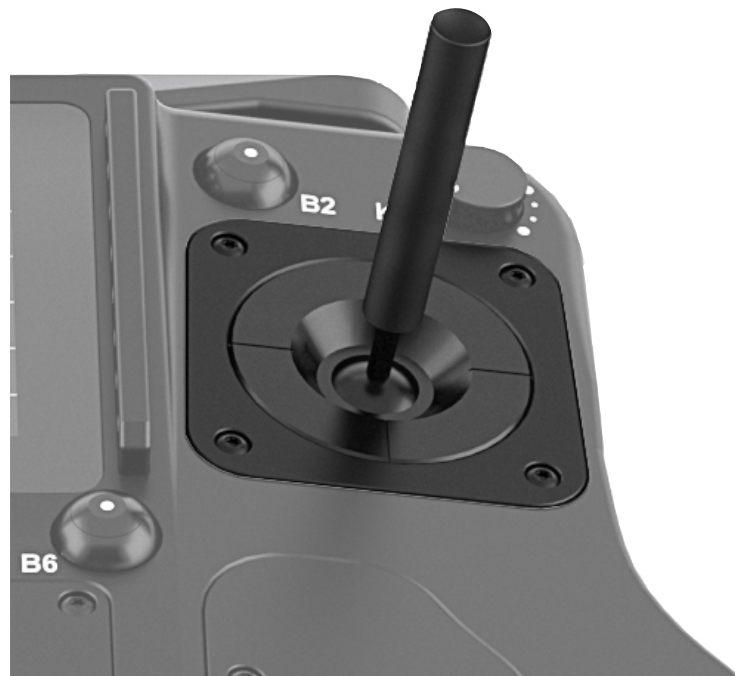


Standard Joystick

for SRH Remote Control Panel

Installation Guide

Date 23.03 2020



Imprint

Copyright © 2020 Arnold & Richter Cine Technik GmbH & Co. Betriebs KG.
All rights reserved.

No parts of this document may be reproduced without prior written consent of Arnold & Richter Cine Technik GmbH & Co. Betriebs KG. Specifications are subject to change without NOTE. Errors, omissions, and modifications excepted.

ARRI, ALEXA, AMIRA, LDS and LENS DATA SYSTEM are trademarks or registered trademarks of Arnold & Richter Cine Technik GmbH & Co. Betriebs KG. All other brands or products are trademarks or registered trademarks of their respective holders and should be treated as such. Original version.

For further assistance:

Arnold & Richter Cine Technik GmbH & Co. Betriebs KG
Herbert-Bayer-Str. 10
80807 München
Germany
www.arri.com

Document revision history

Version	Release	Date
1.0	F07360	23.03.2020

Scope

This document describes the installation of the
K2.0037198 Standard Joystick for SRH Remote Control Panel

Disclaimer

Before using the products described in this manual, be sure to read and understand all the respective instructions.

Otherwise the customer must contact ARRI before using the product.

While ARRI endeavors to enhance the quality, reliability and safety of their products, customers agree and acknowledge that the possibility of defects thereof cannot be eliminated entirely.

To minimize the risk of damage to property or injury (including death) to persons arising from defects in the products, customers must incorporate sufficient safety measures in their work with the system and heed the stated conditions of use.

ARRI or its subsidiaries do not assume any responsibility for losses incurred due to improper handling or configuration of the TRINITY or other system components.

ARRI assumes no responsibility for any errors that may appear in this document. The information is subject to change without NOTICE.

For product specification changes after this manual was published, refer to the latest published ARRI data sheets or release notes, etc., for the most up-to-date specifications.

Not all products and/or types are available in every country. Please check with an ARRI sales representative for availability and additional information.

Neither ARRI nor its subsidiaries assume any liability for infringement of patents, copyrights or other intellectual property rights of third parties by or arising from the use of ARRI products or any other liability arising from the use of such products. No license, express, implied or otherwise, is granted under any patents, copyrights or other intellectual property right of ARRI or others.

ARRI or its subsidiaries expressly exclude any liability, warranty, demand or other obligation for any claim, representation, cause, action, or whatsoever, express or implied, whether in contract or not, including negligence, or incorporated in terms and conditions, whether by statute, law or otherwise. In no event shall ARRI or its subsidiaries be liable for or have a remedy for recovery of any special, direct, indirect, incidental, or consequential damages, including, but not limited to lost profits, lost savings, lost revenues or economic loss of any kind or for any claim by a third party, downtime, good-will, damage to or replacement of equipment or property, any cost or recovery of any material or goods associated with the assembly or use of our products, or any other damages or injury of the persons and so on or under any other legal theory.

In the event that one or all of the foregoing clauses are not allowed by applicable law, the fullest extent permissible clauses by applicable law are validated.

Table of Contents

1 For your safety	4
2 Installation	5 & 6
3 Assigning the Controllers	7

1 For your safety

⚠ Warning
<p>The SRH-3 and SRH-360 system and products should only be used by experienced and trained operators.</p> <p>This product is NOT designed for inexperienced users and should not and must not be used without proper training.</p> <p>ARRI recommends that all users of the SRH-3 and SRH-360 system read the manual in its entirety prior to use.</p>

All directions are given from a camera operator's point of view. For example, camera-right side refers to the right side of the camera when standing behind the camera and operating it in a normal fashion.

The appendix at the back of the manual contains useful reference material including specifications, connector pin-out diagram.

Before use, please ensure that all users comprehensively read, understand, and follow the instructions in this document.

1.1 Risk Levels and Alert Symbols

Safety warnings, safety alert symbols, and signal words in these instructions indicate different risk levels:

⚠ DANGER
<i>Danger</i> indicates an imminent hazardous situation which, if not avoided, will result in death or serious injury.
⚠ Warning
<i>WARNING</i> indicates a potentially hazardous situation which, if not avoided, may result in death or serious injury.
⚠ CAUTION
<i>CAUTION</i> indicates a potentially hazardous situation which, if not avoided, may result in minor or moderate injury.
NOTICE
<i>NOTE</i> explains practices not related to physical injury. No safety alert symbol appears with this signal word.
NOTE
Provides additional information to clarify or simplify a procedure.

2 Installing the Microforce Joystick

Preparation

⚠ CAUTION

Disconnect any power supply from the remote panel!

NOTE

A T10 Torx screwdriver is needed for the next steps.

2.1

Dismantling the bottom cover

Turn the panels over and remove the six Torx screws.



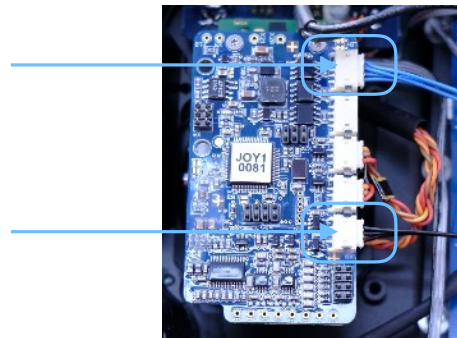
2.2

Disconnecting cables

If a joystick is already installed, please carefully disconnect the marked cables.

DANGER

Do not pull on the cable!
Pull the white connector to disconnect



2.3

Dismantling the joystick panel

NOTE

A T10 Torx screwdriver is needed for the next steps.

Unscrew and remove the four Torx screw.



2.4

Removing the cover / joystick

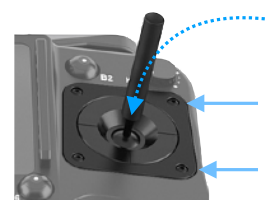
Remove the right upper cover.
Respectively, remove the previously installed joystick.



2.5

Placing the Standard Joystick

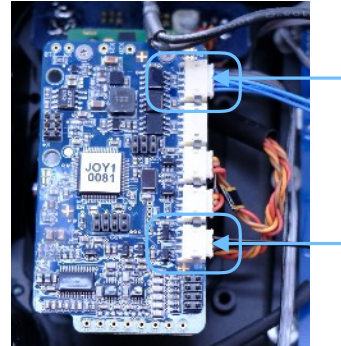
Note the contour of the joystick cover.
Insert the joystick in the control panel according to its shape.
Place the four Torx screws and tighten them.



Controller Assignment

2.6 Connecting the Joystick

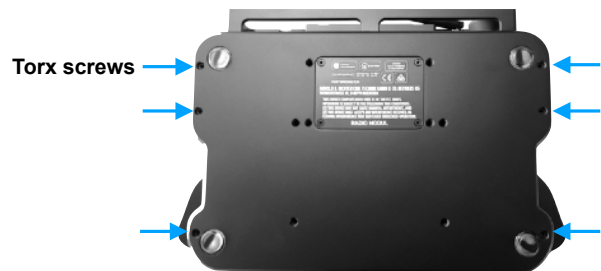
Plug carefully the BLUE and BLACK cables into the new Microforce Joystick.



2.7 Attaching the bottom cover

Turn the panels over and place the bottom cover on the housing.

Place the Torx screws and tighten the screws evenly.



3 Assigning the new controller

NOTE
SUP 2.3 is required to use the Microforce joystick



3.1 Assigning Pan

- Touching the area below Pan, will open a new touchscreen display menu.
- Next touch **Assign**
- Select **J1 H** (Joystick 1 Horizontal)
- **Press Assign**

3.2 Assigning Tilt

- Touching the area below Pan, will open a new touchscreen display menu.
- Next touch **Assign**
- Select **J1 V** (Joystick 1 Vertical)
- **Press Assign**